

# Synchronization

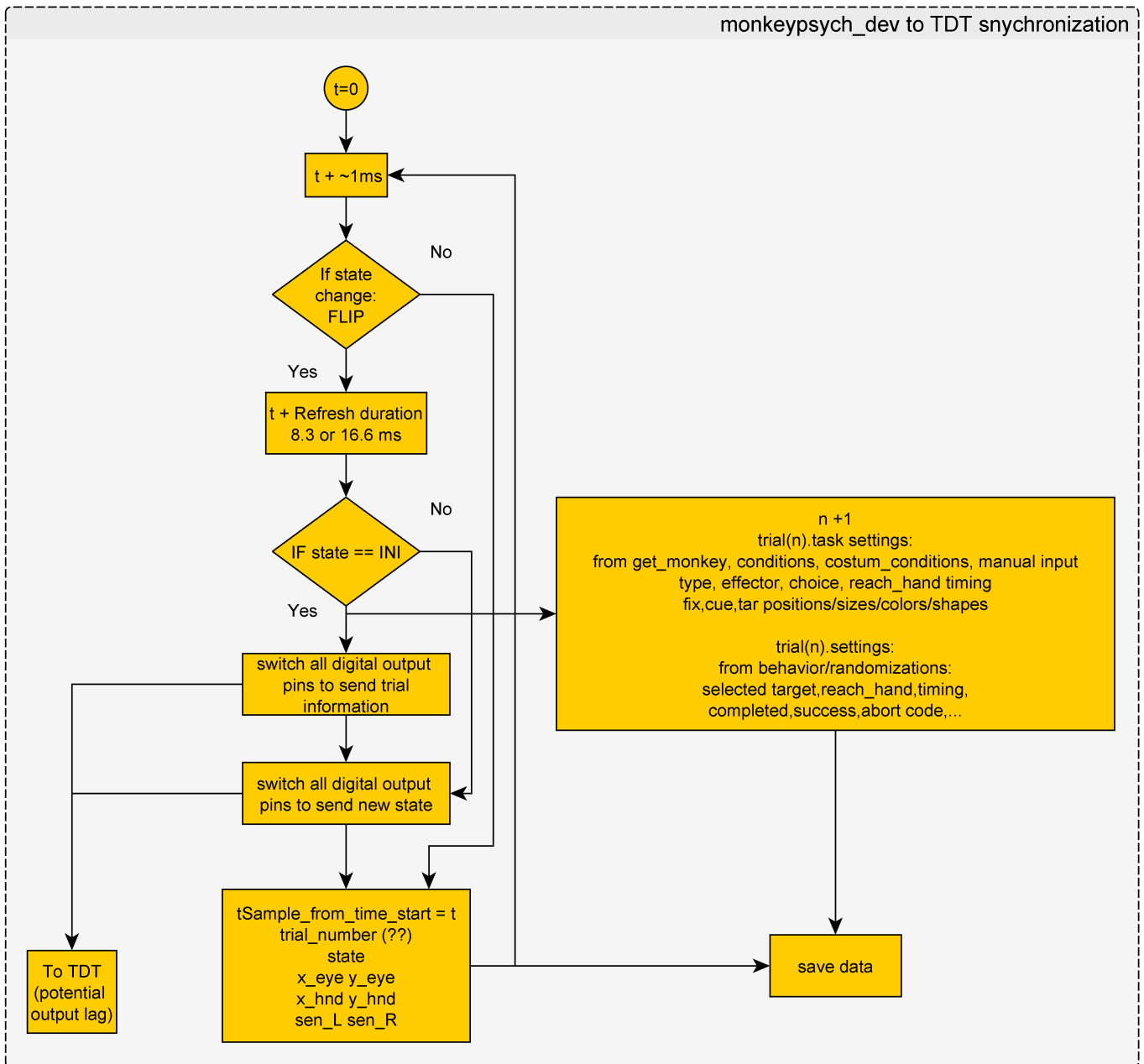
This section describes how synchronization is achieved.

- TDT data is stored as a continuous data (starting from start of recording)
- behavioral data is stored per trial (starting from first trial)

Synchronization is enabled by sending state and trial information from monkeypsych to TDT ([Online communication](#)). Both state and trial information is sent through the same 8 pins, a little trick allows using the same channel for both purposes ([State signal](#)). For combining both, we first convert TDT data to trial format (function TDT\_trial\_struct.m) preferentially using epocs store (Tnum and SVal) information. There is a flag in TDT\_trial\_struct for using the continous state information stream (stream\_state\_info), but it is permanently turned off, as the epoc information is already extracted from the continuous state information within the TDT circuit (see [RCO](#)) Finally, when fitting TDT data into a trial structure, certain timing conventions have proved useful: [Trial structure timing](#)

## Synchronization during recording

### monkeypsych\_dev to TDT snychronization



Note that pins are only switched either to send trial information or after a state change (AND after the flip happened!) The idea is that both trial information and state information can be sent via the same channel. Details are described below.

## Resulting 8 pin state signal

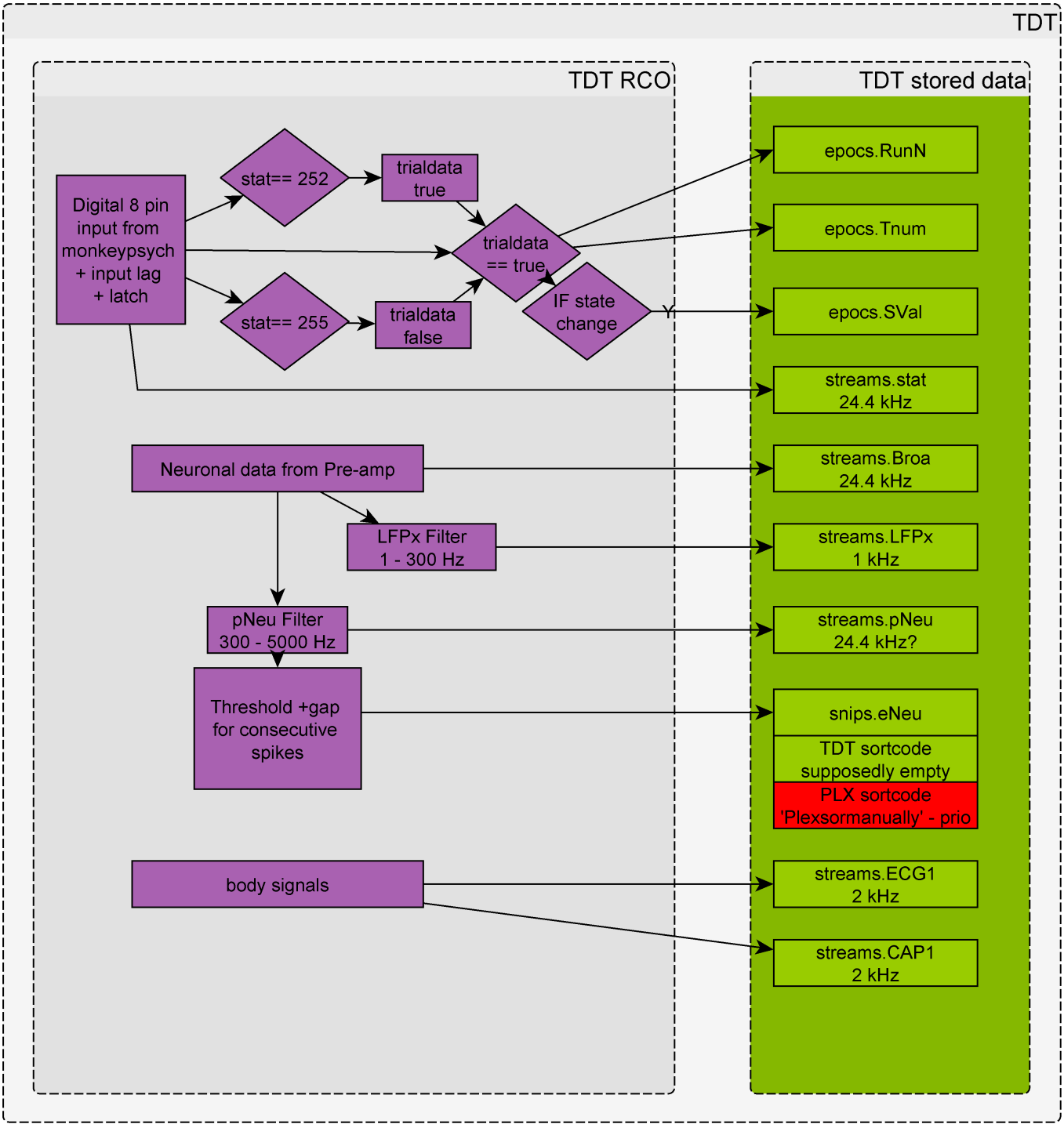


Values of 252 to 255 are preserved for indicating start of trial/state information and in-between trial information stoppers:

- 252: indicates start of trial information
- 254: in between trial information to define trialinfo packages
- 253: end of trial information
- 255: start of state information

Note that due to preserved values, a trial information package maximum value is limited. For example, to encode the date first package would be first 2 digits of the year, second package the last 2 digits of the year, third package the month and fourth package the day. That way none of the packages reaches a value of over 100. Trial information is sent during INI (state 1), during the other states the stat value reflects the current state.

# TDT Internal RCO



# Snippet and Stream synchronization in the combined trial structure



Importantly, trial start reference is STATE 2 (fixation acquisition). Trial end is STATE 2 of the next trial. Therefore, ITI between trial 1 and 2 as well as STATE 1 (initiation) of trial 2 are found at the end of trial 1.

This also means that data recorded before 1st trial's state 2 can not be stored in the trial structure and is saved in a separate variable (First\_trial\_INI) instead. Everything before first trials INI is discarded.

From:

<http://dag.dokuwiki.dpz.lokal/> - **DAG wiki**

Permanent link:

[http://dag.dokuwiki.dpz.lokal/doku.php?id=ephys\\_pipeline:2\\_synchronization](http://dag.dokuwiki.dpz.lokal/doku.php?id=ephys_pipeline:2_synchronization)

Last update: **2022/12/29 07:15**

